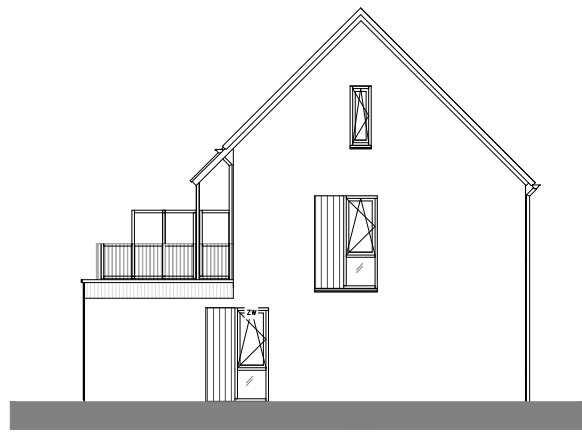
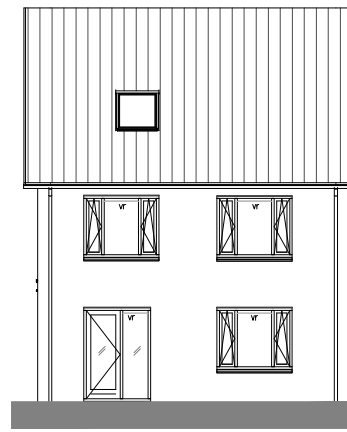


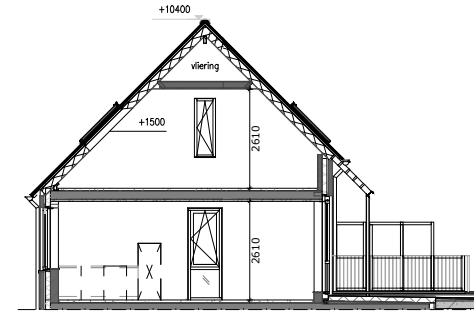
**Voorgevel 1:200**



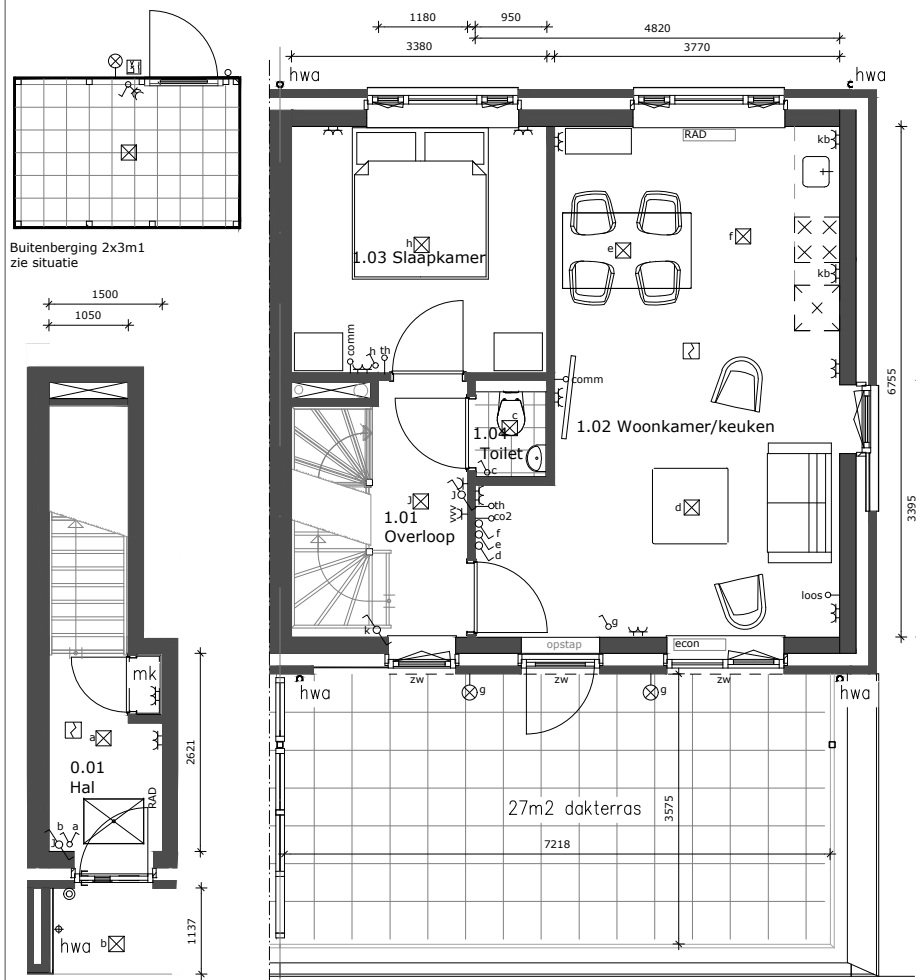
**Rechter zijgevel 1:200**



**Achtergevel 1:200**

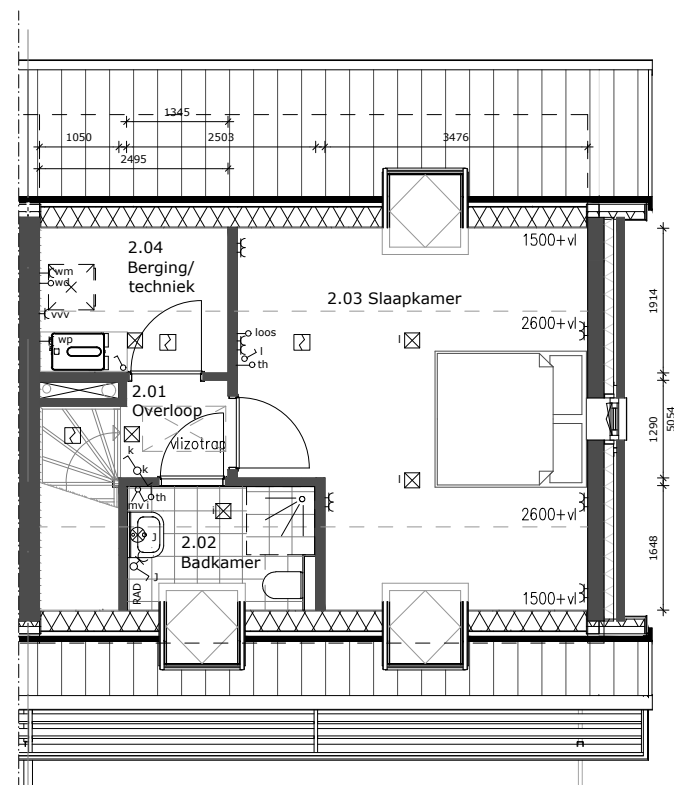


**Doorsnede 1:200**

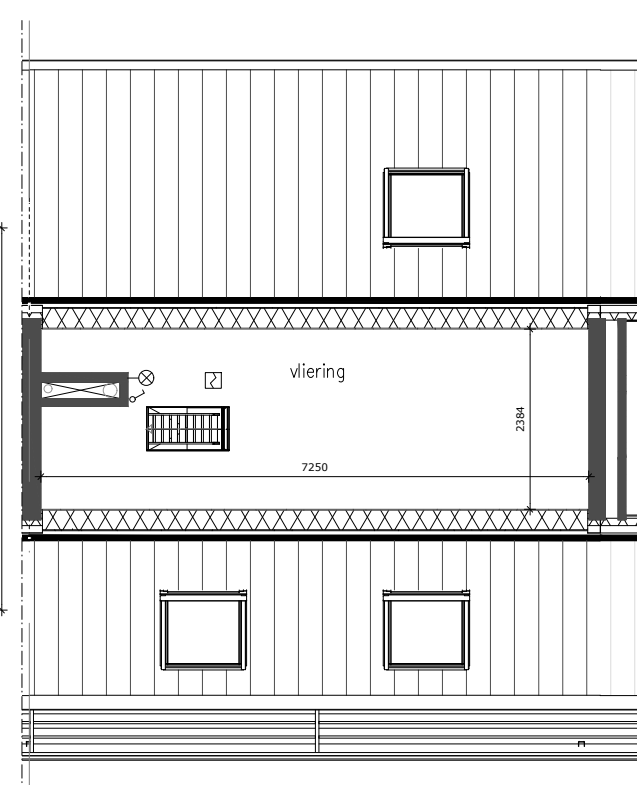


**begane grond  
1:100**

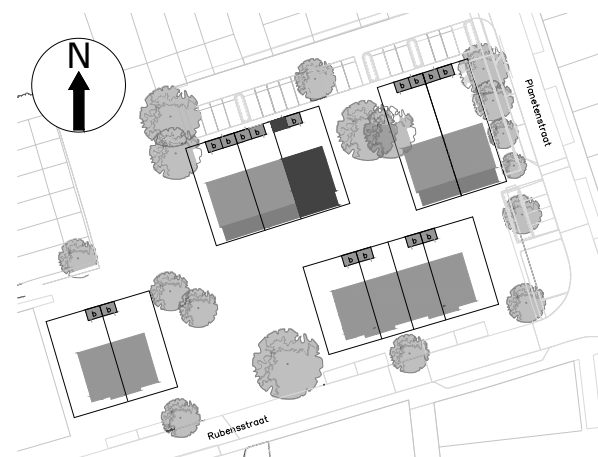
**1e verdieping  
1:100**



**2e verdieping  
1:100**






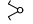
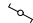




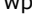
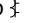

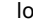
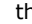

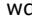

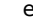
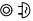


**Vliering  
1:100**



**Situatie 1:1500**

## renvooi

-  rookmelder, volgens NEN 2555
-  wandaansluitpunt verlichting
-  aansluitpunt buitenverlichting
-  plafondaansluitpunt verlichting
-  enkelpolige schakelaar 1050+
-  serieschakelaar 1050+
-  wisselschakelaar 1050+
-  schemerschakelaar
-  dubbel wandcontactdoos 300+
-  aansluiting wasmachine
-  vloerverwarmingverdeler
-  warmtepomp-aansluiting
-  dubbel wandcontactdoos 1100+ boven keukenblad
-  bediening mechanische ventilatie 1500+
-  communicatie 300+
-  loze leiding tot in de meterkast 300+
-  thermostaat 1500+
-  CO2 opnemer ventilatie 1500+
-  loze wasdroger
-  elektrische wandradiator
-  noodoverstort
-  elektrische Jaga mini convector
-  locatie buiten zonwering dmv afstandsbediening te schakelen
-  Deurbel en schel

*Meubilair, keuken en technische installatie zijn indicatief weergegeven. Als gevolg van nadere bouwkundige uitwerking kan de maatvoering in werkelijkheid afwijken.*

# Regenboogbuurt

## VERKOOPTEKENING

**huisnummer :** 55 bovenwoning

**datum :** 23-01-2025

**naam koper :**

**Kormelink** 

't halt 2, 7165 bv rietmolen  
0545 221281  
info@kormelinkbouw.nl  
www.kormelinkbouw.nl