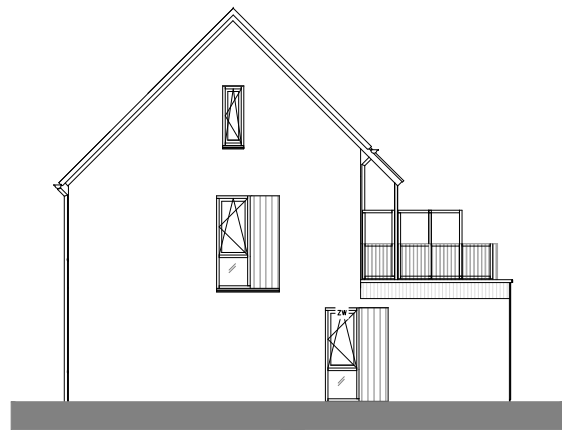
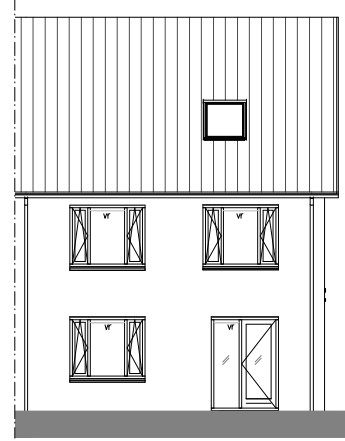


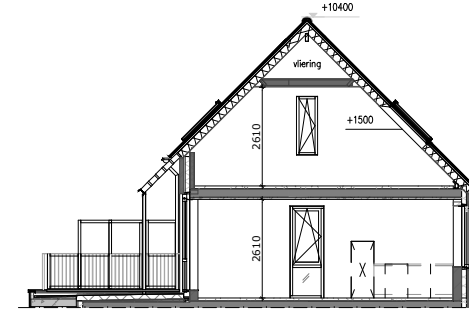
Voorgevel 1:200



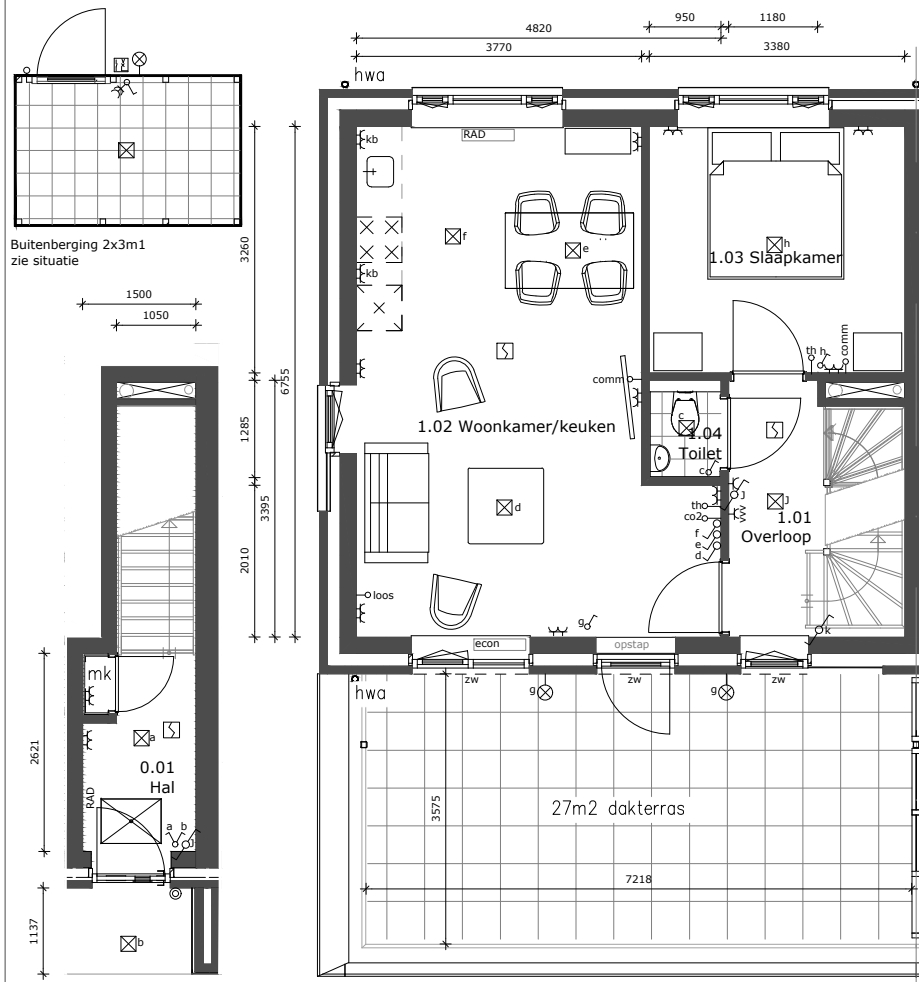
Linker zijgevel 1:200



Achtergevel 1:200

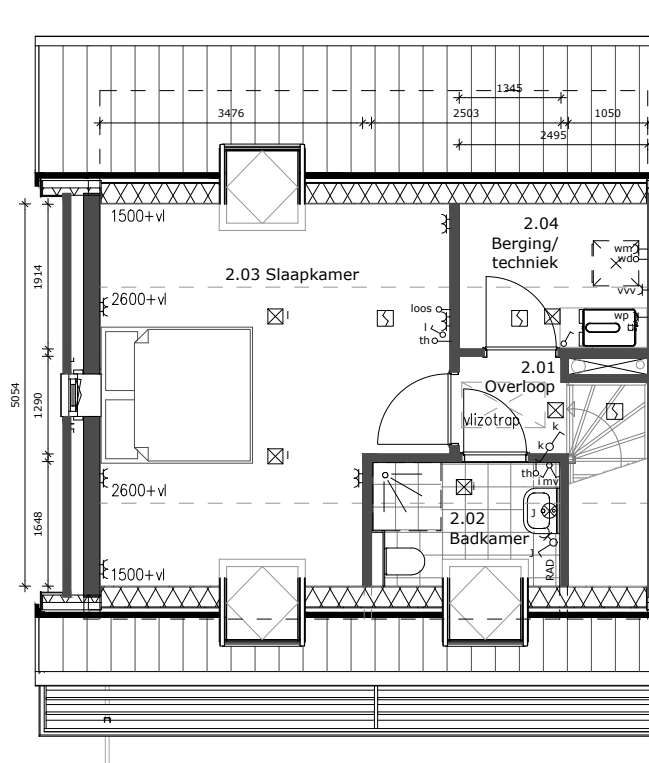


Doorsnede 1:200

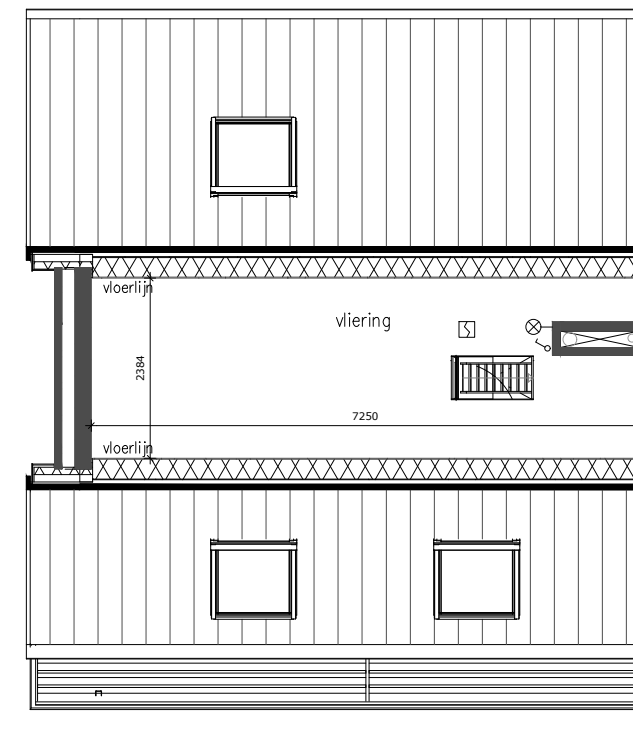


**begane grond
1:100**

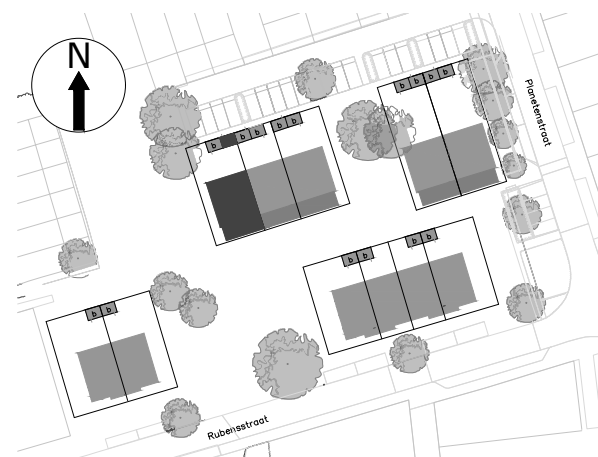
1e verdieping 1:100



2e verdieping 1:100






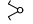
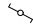




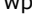
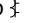
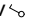
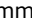
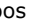
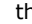

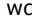

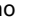

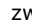
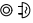


Vliering 1:100



Situatie 1:1500

renvooi

-  rookmelder, volgens NEN 2555
-  wandaansluitpunt verlichting
-  aansluitpunt buitenverlichting
-  plafondaansluitpunt verlichting
-  enkelpolige schakelaar 1050+
-  serieschakelaar 1050+
-  wisselschakelaar 1050+
-  schemerschakelaar
-  dubbel wandcontactdoos 300+
- wm  aansluiting wasmachine
- vvv  vloerverwarmingverdeler
- wp  warmtepomp-aansluiting
- kb  dubbel wandcontactdoos 1100+ boven keukenblad
- mv  bediening mechanische ventilatie 1500+
- comm  communicatie 300+
- loos  loze leiding tot in de meterkast 300+
- th  thermostaat 1500+
- co2  CO2 opnemer ventilatie 1500+
- wd  loos wasdroger
- RAD  elektrische wandradiator
- no  noodoverstort
- econ  elektrische Jaga mini convector
- _zw_  locatie buiten zonwering dmv afstandsbediening te schakelen
-  Deurbel en schel

Meubilair, keuken en technische installatie zijn indicatief weergegeven. Als gevolg van nadere bouwkundige uitwerking kan de maatvoering in werkelijkheid afwijken.

Regenboogbuurt

VERKOOPTEKENING

huisnummer : **63 bovenwoning**

datum : **23-01-2025**

naam koper :

Kormelink 

't halt 2, 7165 bv rietmolen
0545 221281
info@kormelinkbouw.nl
www.kormelinkbouw.nl